

1 St Marys Assembly Rooms, Northgate Street, Devizes, Wiltshire, SN10 1LB



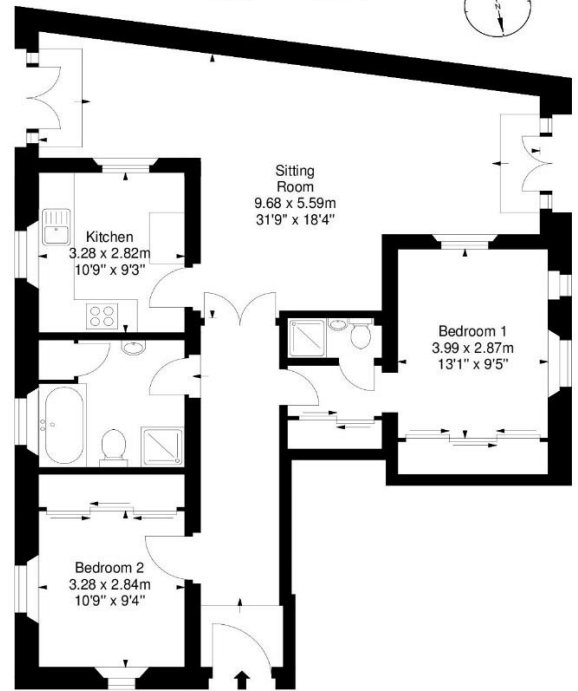
And now for something completely different! A stunning conversion of a former Victorian Assembly rooms to create a home of considerable character with beautifully presented accommodation arranged on the ground floor. You enter via your own private Gothic style entrance doors on the ground floor into an impressive reception hall, there is a large light sitting room with a dining area and French doors opening onto a choice of two private walled patio gardens, one is south facing. There is a contemporary kitchen/breakfast room, a master bedroom with en suite, second bedroom and a stylish bathroom with both a bath and separate shower. Many fine original Gothic style features remain, which include stone mullion leaded light windows. The interior is enhanced by attractive oak interior doors, tasteful neutral decoration and is warmed by gas central heating. This location is very convenient, only a hop, skip and a jump from the market place. Devizes is a splendid historic market town that still hosts a weekly traditional outdoor market. There is an excellent range of shopping facilities and the town provides easy access to the larger cities of Georgian Bath and the cathedral leading of Salisbury. There are mainline railway stations at nearby Pewsey and Chippenham(London, Paddington)approx. one hour twenty minutes with junction 17 of the M4 motorway also close at hand. TENURE; LEASEHOLD 999 YEARS RESIDUE FROM 2007. SERVICE CHARGE £600 P.A. PEPPERCORN GROUND RENT

Guide Price £300,000



**1 St. Marys Assembly Rooms,
Devizes**

Approx. Gross Internal Area *
101.73 M² - 1095 Ft²



Ground Floor

Illustration For Identification Purposes Only. Not To Scale

* As Defined by RICS - Code of Measuring Practice



Important Notice

Hunter French, their clients and any joint agents give notice that:

1. They have no authority to make or give any representation or warranties in relation to the property. These particulars do not form part of an offer or contract and must not be relied upon as statements or representations of fact.
2. Any areas, measurements or distances are approximate. The text, photographs and plans are for guidance only and are not necessarily comprehensive. It should not be assumed that the property has all necessary planning, building regulation or other consents and Hunters French have not tested any services, equipment or facilities. Purchasers must satisfy themselves by inspection or otherwise

Bath City Office
6 Balustrade
London Road Bath
BA1 6QA

Corsham Office
3 High Street
Corsham
SN13 0ES

Devizes Office
15 Market Place
Devizes
SN10 1HT

Frome Office
19 Paul Street
Frome
BA11 1DT